

CM-4500XL INSULATION BLOWING MACHINES

The King Size CM-4500XL machine combines a large (3.54 m³) hopper, high speed production into a simple, compact machine that **can do-it-all**. The oversized airlock feeder and 5 or 10 hp positive displacement (PD) blower provides pressure for the big jobs.

Our range of CM-4500XL insulation blowing machines are designed for **huge insulation applications** and for **constantly daily use**. They have very high capacities and are **extremely robust**. The insulation machines are ideal for constructors for whom insulation blowing is the primary business or for the construction company with multiple installer teams.

The CM-4500XL design focus on **high material capacities** and **efficient blowing capacity** while keeping the design of the machine very compact. It provides a lot of advantages in setting up the machine and equipment in a truck or trailer. The **narrow slim, high design** leaves plenty of room for equipment and insulation material.

The CM-4500XL targets the professional installer in need of a setup with **fast working speed** and easy rigging on the jobsites.

The CM-4500XL offers high efficiency for **all types of loose fiber materials**. The uniquely designed augers system, combined with a large airlock and powerful blowers, make it possible to maintain high job ratios and capacities, regardless the choice of insulating material.



**Excellent Performance with
All Types of
Blowing Insulation Materials**

Production Rate

Cellulose 2449 kg/hour

Fiberglas 1089 kg/hour

Rockwool 1225 kg/hour

**Large airlock 30,5 cm x 60,9 cm*

with 5 hp and 10 hp PD blower.



Features and Benefits



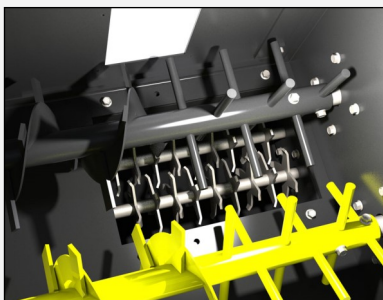
Insulation machines with external blower filter for easy maintenance and observation. Reusable air screen filters provide improved performance and reliability

Powerful sizing of axles and bearings guarantees long service life.

3 low profile *scalping augers* with cyclonic action provide positive fiber feeding with no bridging in hopper.

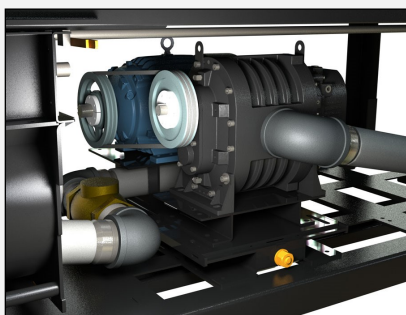
6 chamber airlock provides constant material flow - without pulsating.

The CM 4500XL-S is specially developed for blowing with all types of insulating fibers.



High speed stainless *turbo shredder* maximizes conditioning, coverage, and production.

Option: Long Distance Wireless Remote System



Long-life PD blowers provide superior vacuum and blowing performance.

LED power plugs for quick electrical troubleshooting.



CM 4500XL-S Standard

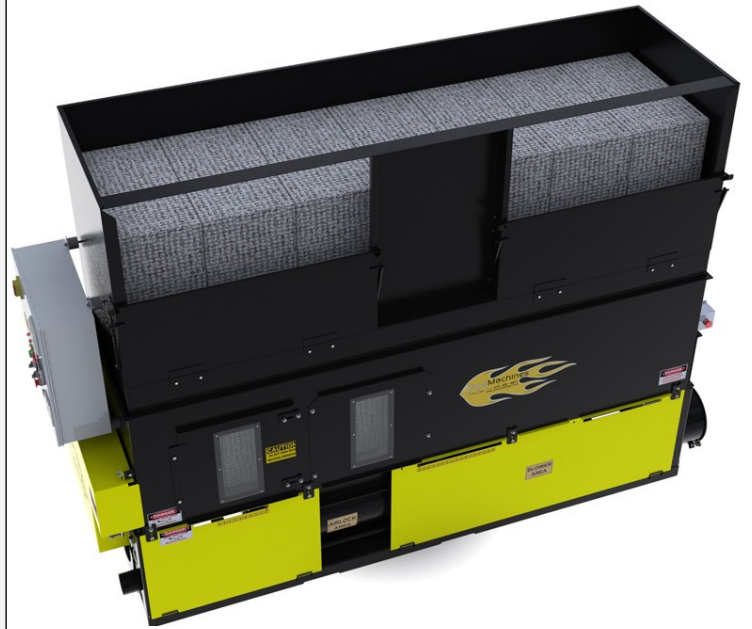
Standard

The control functions are simple and easy to understand. The manual thermal overloads provide a component that is easily re-set, reliable, and most importantly - safe.

The high capacity makes it extremely efficient at jobsites in larger commercial buildings, blocks of flats or older story buildings.

Fast speeds with long range. The big airlock and **10 hp PD blower** gives you high production - up to 90 m range.

Ask for Additional Machine Options



Weights and Measures

Weight:

1120 kg with 5 hp PD Blower, 400 Volt

1188 kg with 10 hp PD Blower, 400 Volt

Dimensions (length x width x height):

328 cm x 89 cm x 226 cm

Hopper Capacity:

3.54 m³

6 Chamber Airlock:

Sizes (diameter x length)

30.5 x 60.9 cm, 4" / 102 mm output tube

Technical data

Drive Motor:

3 hp / 2.21 kW

Blower Options:

5 hp - 306 m³/hour (PD Blower)

10 hp - 594 m³/hour (PD Blower)

Airlock pressure:

440 mbar

Power Requirements:

20 amp., 400 Volt, 3 phases, 5 hp PD Blower

40 amp., 400 Volt, 3 phases, 10 hp PD Blower

***PD = Positive Displacement Motor**

CM 4500XL-VP Vac-Pack

Vac-Pack technology offers a low maintenance, positive pressure vacuum system with no slow down in production, and discharges into the neutral pressure hopper inside the trailer/truck with no resulting air surges or dust.

This system offers a fast, smooth spraying application while minimizing set-up time and maximizing endurance of the system.

Integrated Proprietary Vac-Pack technology allows for vacuuming of sprayed material excess to be recycled back into system.

Our 'integrated recycle technology' precisely controls the introduction of dry and recycle fiber in a separate metering hopper. This process significantly increases speed of application and decreases moisture. These features allow the contractor to reduce labor while allowing the spray nozzle to run non-stop.



Weights and Measures

Weight:

1563 kg with Dual 5 hp PD Blower, 400 Volt

1699 kg with Dual 10 hp PD Blower, 400 Volt

Dimensions (length x width x height):

330 cm x 91,5 cm x 226 cm

Hopper Capacity:

Dry: 2.58 m³

Recycle: 0.75 m³

Total: 3.33 m³

6 Chamber Airlock:

Sizes (diameter x length)

30.5 x 60.9 cm, 4" / 102 mm output tube

Technical data

Drive Motor:

3 hp / 2.21 kW

Blower Options:

Dual 5 hp - 306 m³/hour (PD Blowers)

Dual 10 hp - 594 m³/hour (PD Blowers)

Airlock pressure:

440 mbar

Power Requirements:

30 amp., 400 Volt, 3 phases, Dual 5 hp PD Blowers

50 amp., 400 Volt, 3 phases, Dual 10 hp PD Blowers

**PD = Positive Displacement Motor*

Additional information—Wall Spray

Wall Spray - Bring it on!

Our optional 10 hp PD Vac Pack Recovery Systems streamline the spray process and reduce labor costs.

- **Big dry hopper** (2.58 m³) allows operator to leave the truck for long durations assisting with duties inside the structure.
- **Fast vacuum speeds** 10 hp PD Vac Pack system fills the large capacity (0.75 m³) recycle hopper quickly...allowing vacuum operator ample time to scrub walls.

Our proprietary technology with air separator by-pass system, offers a **low maintenance**, positive suction vacuum system with *no* slow down in production.

The 10 hp PD vacuum provides **rapid fill of recycle** with auto shut-off feature to allow time for wall scrubbing process.



High efficiency primary and secondary filters needs serviced once a day. Recycle discharges into neutral pressure hopper with no resulting air surges. Sealed hopper design eliminates dust in vehicle.

This system offers a **fast smooth spraying application** while minimizing set-up time and maximizing endurance of system.

Pay attention: Increased power requirements for electric P.D. vacuum. Dedicated recycle function with *no* dual purpose machine for attic insulation removal.

Features and Benefits

The Vac-Packs dual Long-life PD blowers provide superior vacuum and blowing performance.

Superior performance and long life.

The combination of large material hopper and PD blowers ensures high material capacity.

Constant high pressure and airflow no matter hose size and length - Ideal for long hose lengths and high material elevation.

Increased access to blower module to assist in routine maintenance.

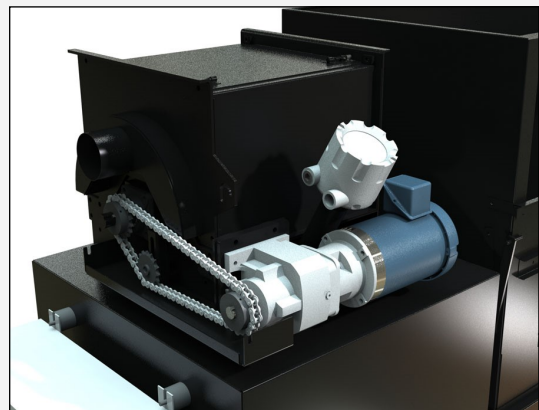


Dual stainless feed gate controls for individual control of dry and recycle fibers.

“Simple” dual slide gate controls for recycle and dry in a single, compact machine provide a fast, accurate application of dry blended fibers into the wall; while conserving space inside your vehicle

New Compact Vac-Pack System with reusable air screen filters provide improved performance and reliability.

Fast vacuum speeds fills the large capacity recycle hopper quickly...allowing vacuum operator ample time to scrub walls.

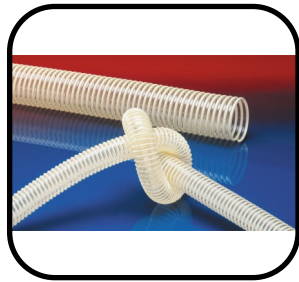




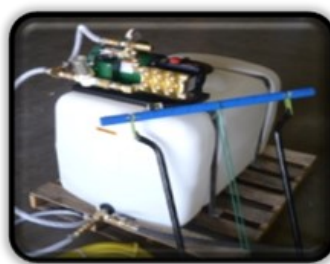
Machine Accessories



Hose Reels



Hoses & Fittings



Water Tanks



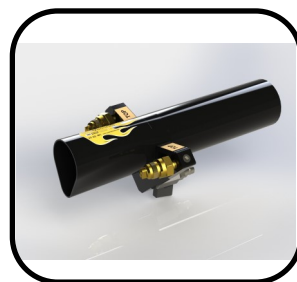
Generators



Water Pumps



Wall Scrubbers



Spray Equipment



Vacuums

Customer Support: Call +45 54 60 90 06 - mail: info@coolmachineseuropa.com

Cool Machines Inc.

Fiber Machines - Cutting Edge Cool



www.coolmachineseuropa.com